

Gaudí Documentation Tools to produce Articles and Presentations

by *Gerrit Muller* University of South-Eastern Norway-NISE

e-mail: `gaudisite@gmail.com`

`www.gaudisite.nl`

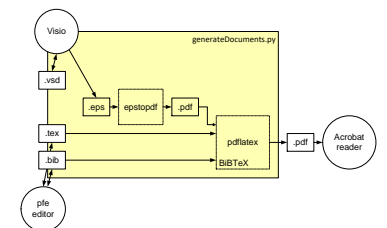
Abstract

This presentation shows the requirements, the choices and the underlying design of the tools to fulfil the goal of the Gaudí project to make the art of system architecting more accessible and understandable.

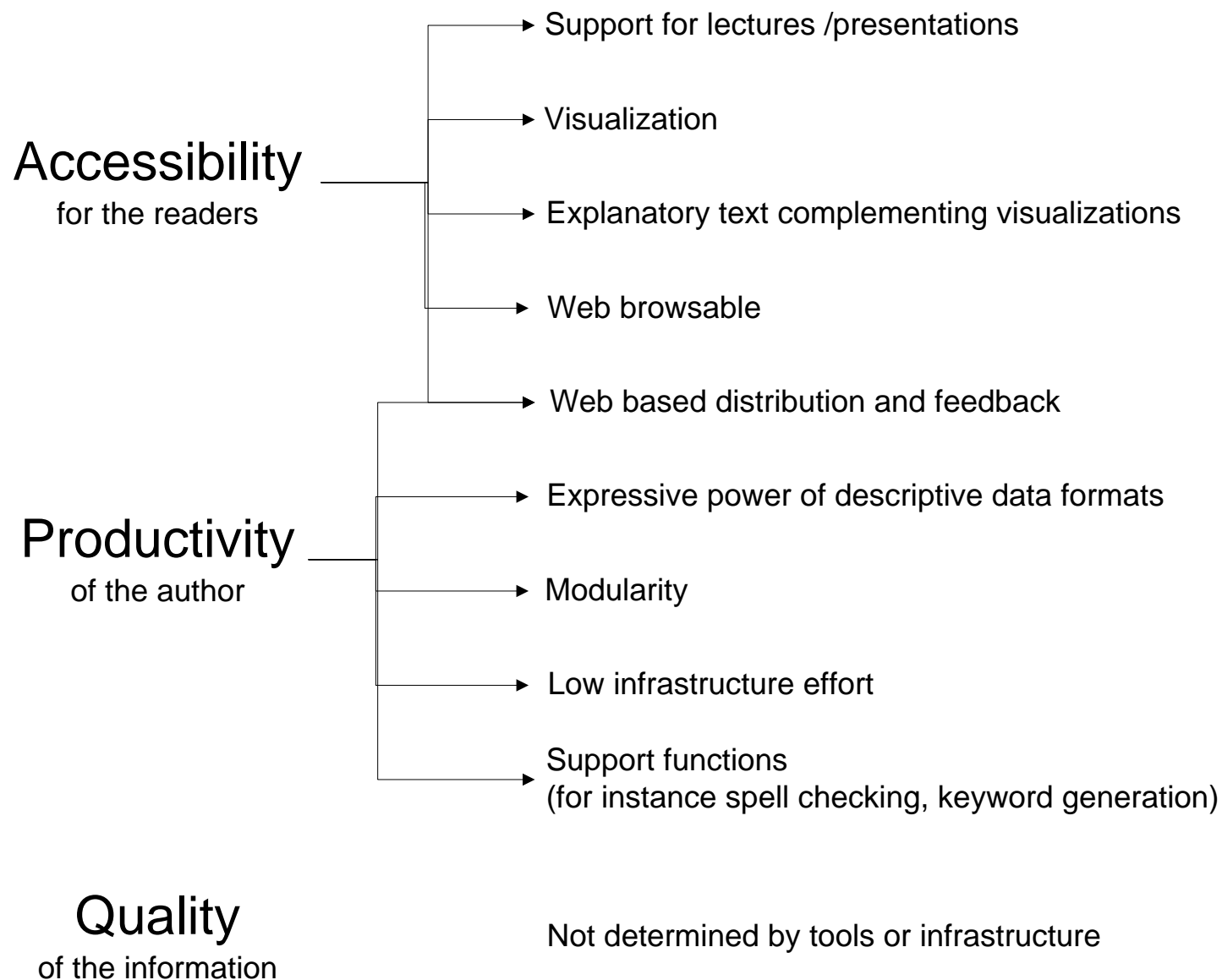
Distribution

This article or presentation is written as part of the Gaudí project. The Gaudí project philosophy is to improve by obtaining frequent feedback. Frequent feedback is pursued by an open creation process. This document is published as intermediate or nearly mature version to get feedback. Further distribution is allowed as long as the document remains complete and unchanged.

September 1, 2020
status: draft
version: 1.2



Key drivers of the user of documentation tools



Output requirements

- Platform independent (1)
- Web enabled (2)
- High quality on paper (3)
- Fast scrolling enabled if viewed on monitor (4)
- Presentations enabled for electronic projection (5)

Management requirements

- Modularity of information (6)
- Minimal redundancy, limited use of copy paste (7)
- Automated creation of aggregated documents, such as books and course modules and binders (8)
- Separation of information and presentation (9)
- Low effort to create and maintain the tools (10)

Source requirements

- Standard Format (11)
- Enabling version management, a.o. by supporting differencing (12)
- Platform Independence (13)
- Support for Rich Graphics, i.e. maintaining the structure of the information (14)
- Bibliography support, including symbolic citation support (15)
- Automatic generation of figure, table and page numbering with symbolic reference support (16)

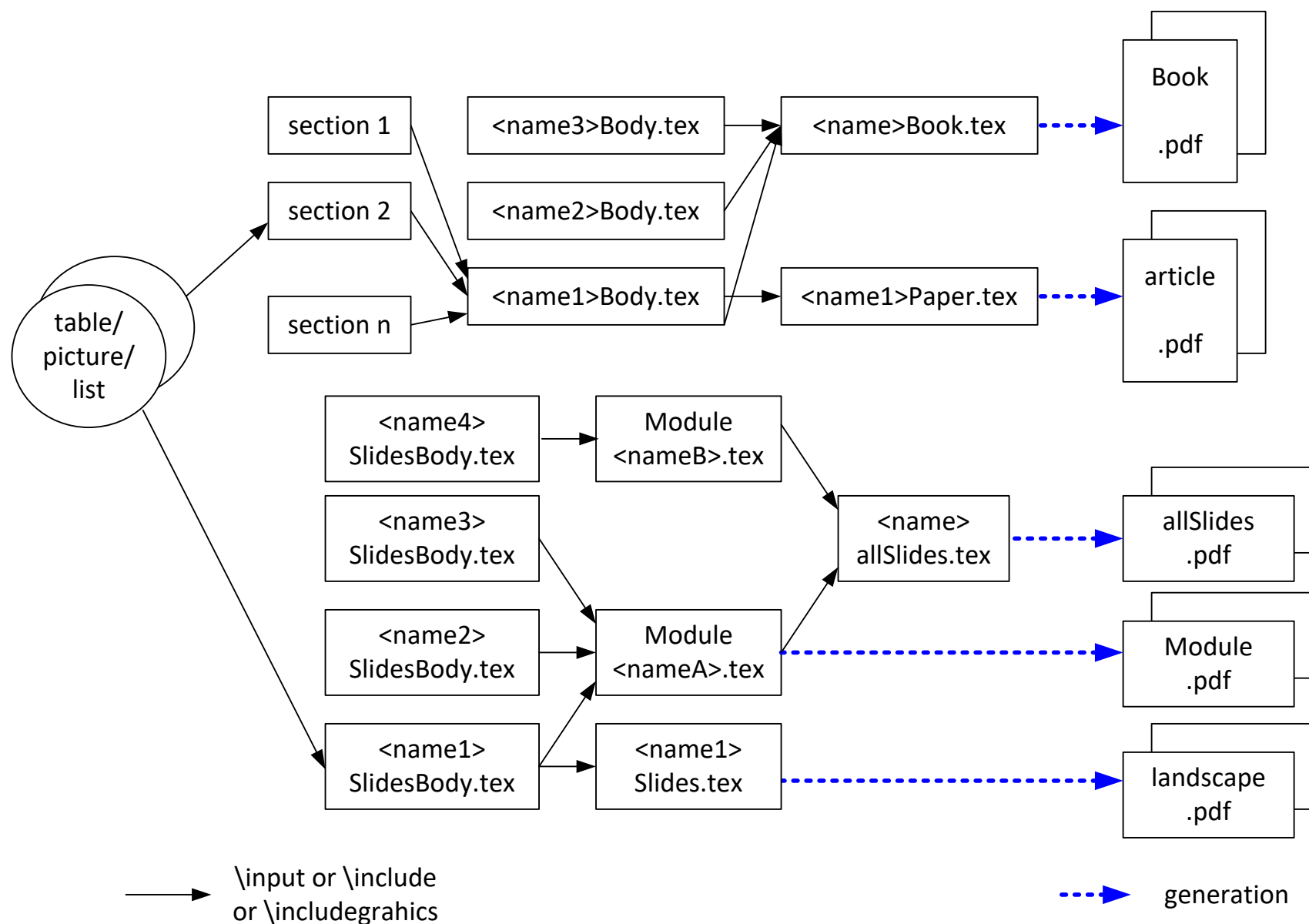
Requirements Use

- Easy (17)
- User actions should have an intuitive and predictable result (18)
- Customizable, f.i. minimize user actions for frequent operations (19)
- Support for Graphics (20)

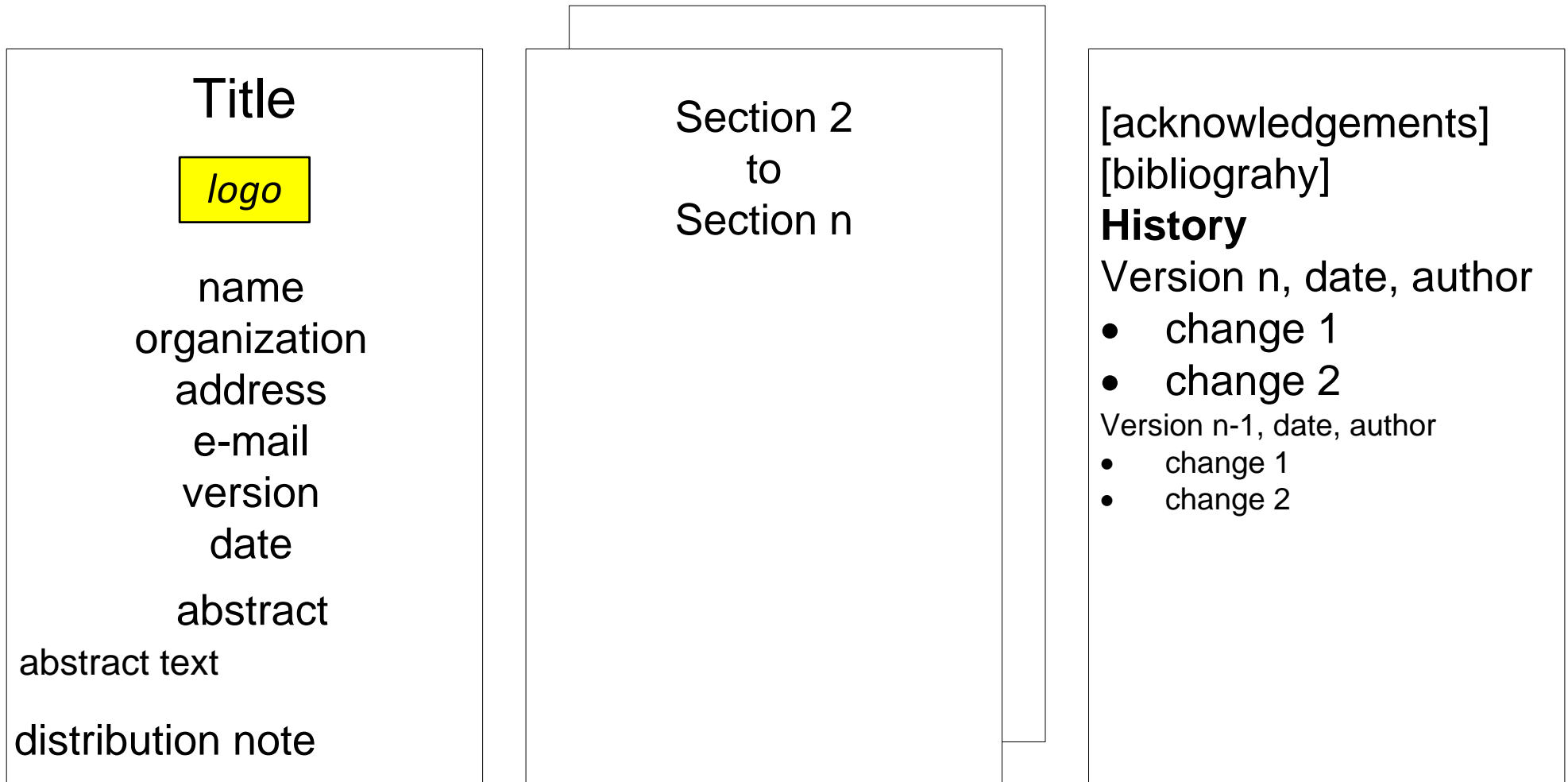
- Platform Independent (21)
- Extendability (22)
- Scalability (23)

- Spell Checking (24)
- Keyword Generation to support web search engines (25)

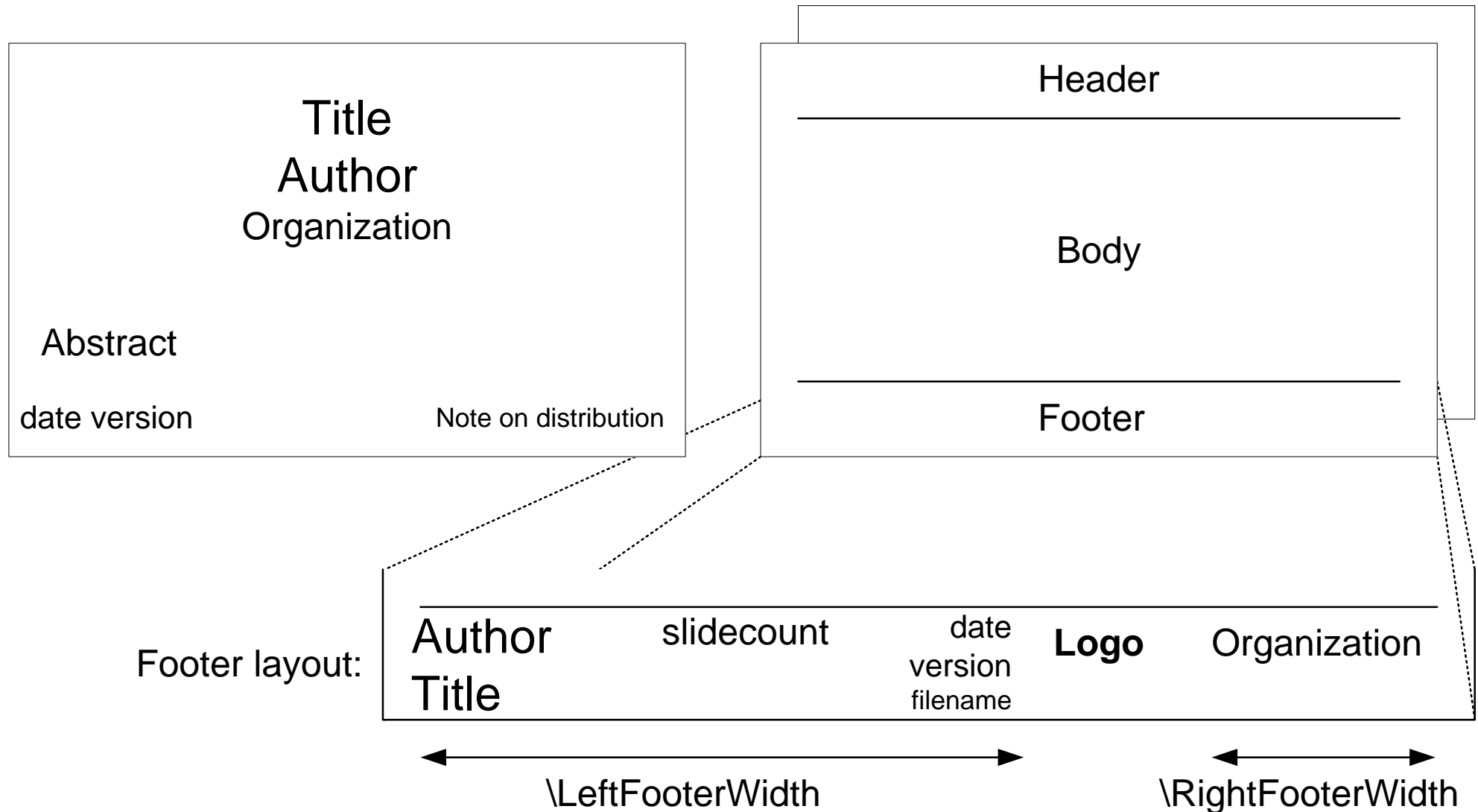
Structure of Source; Relation with Output



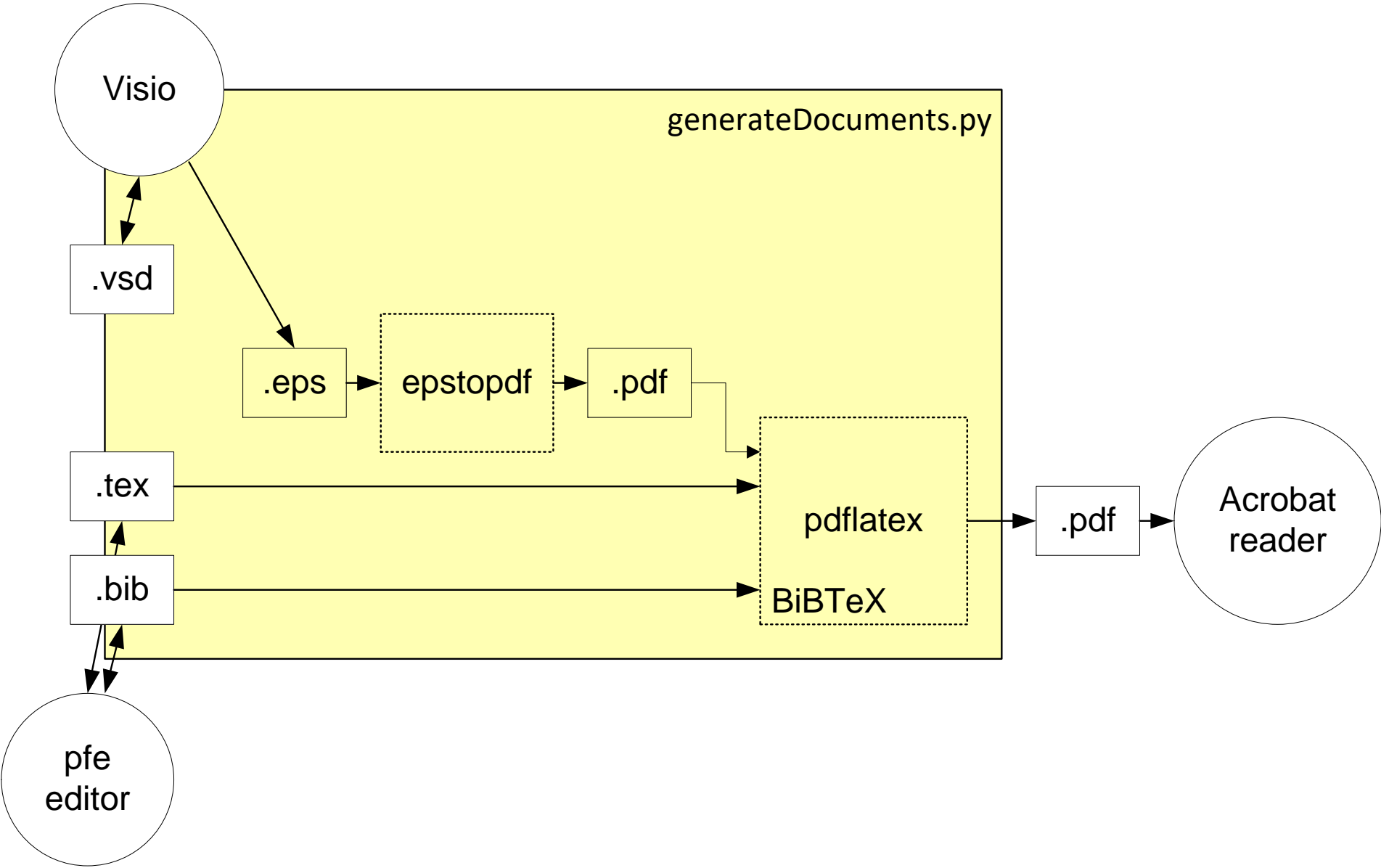
Typical Layout of an article on paper



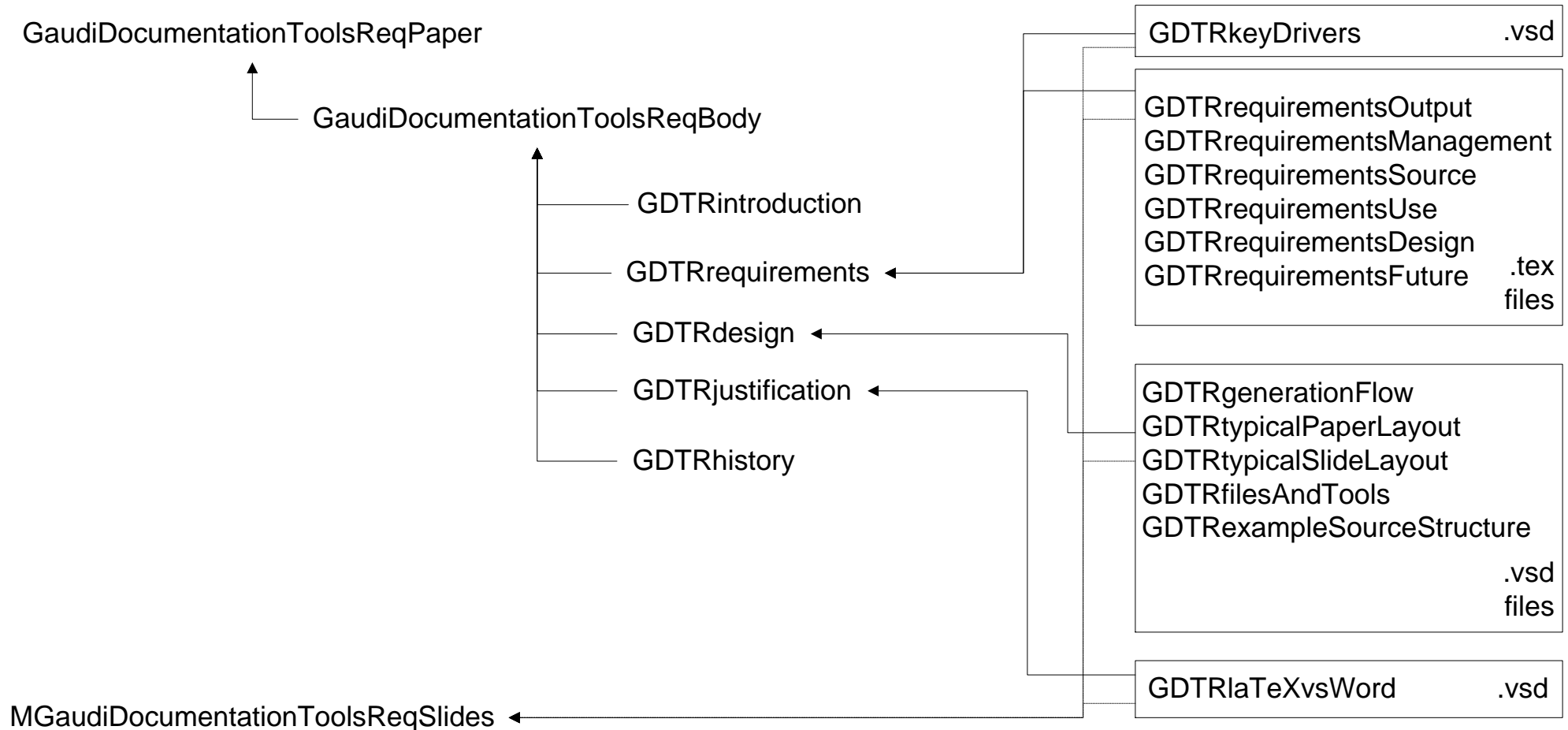
Typical layout of a presentation on slides



Filetypes and transformation from source to output



Example, the source structure of this presentation



Productivity of LaTeX vs Word/Powerpoint

