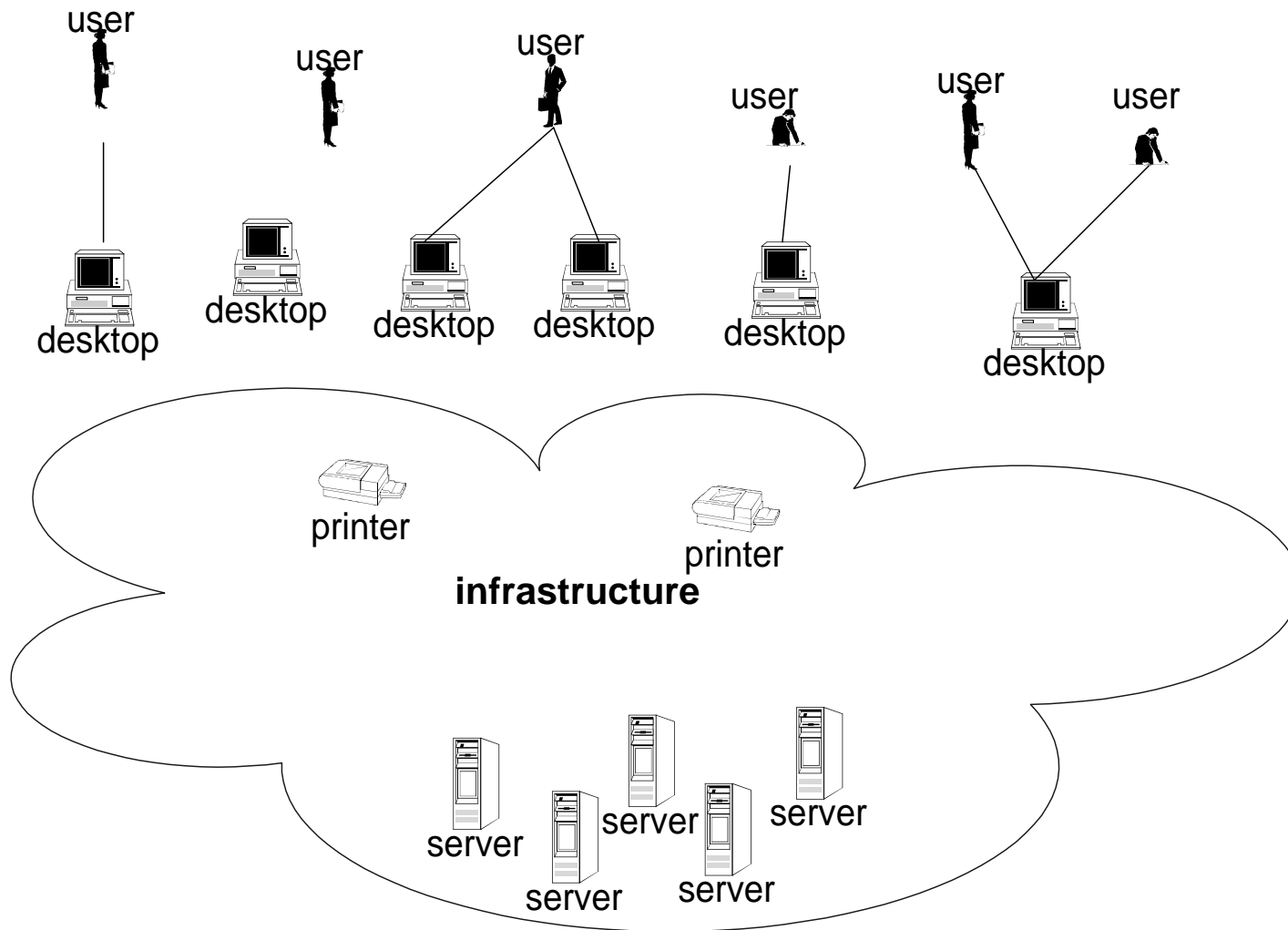


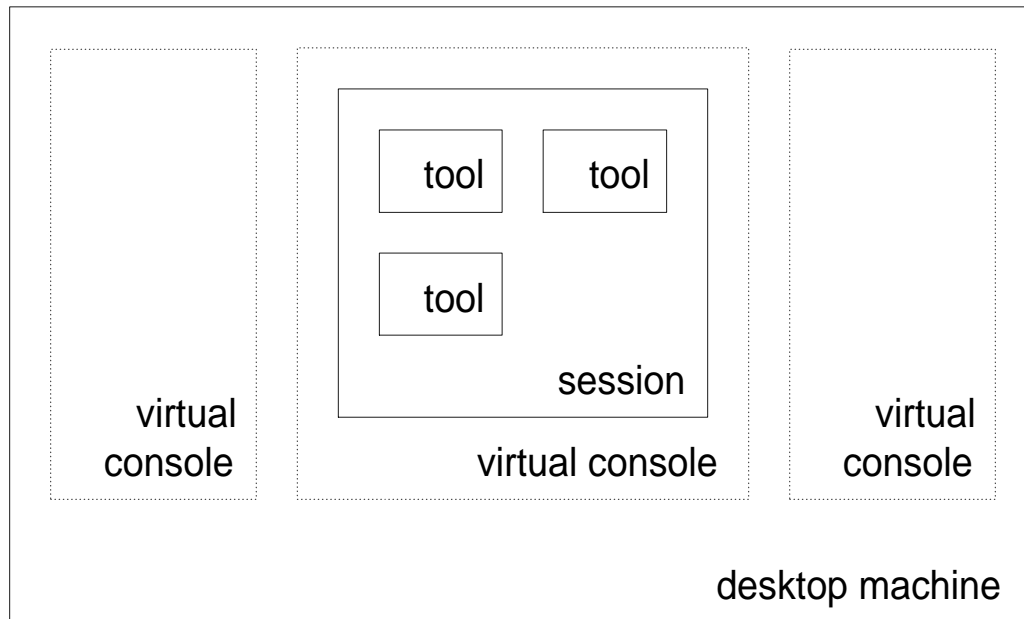


# Users, Desktops and Servers

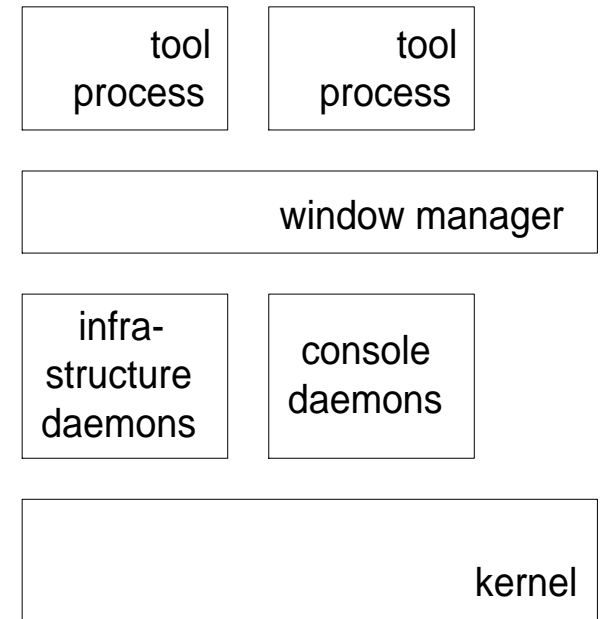


# User visible entities and enabling software

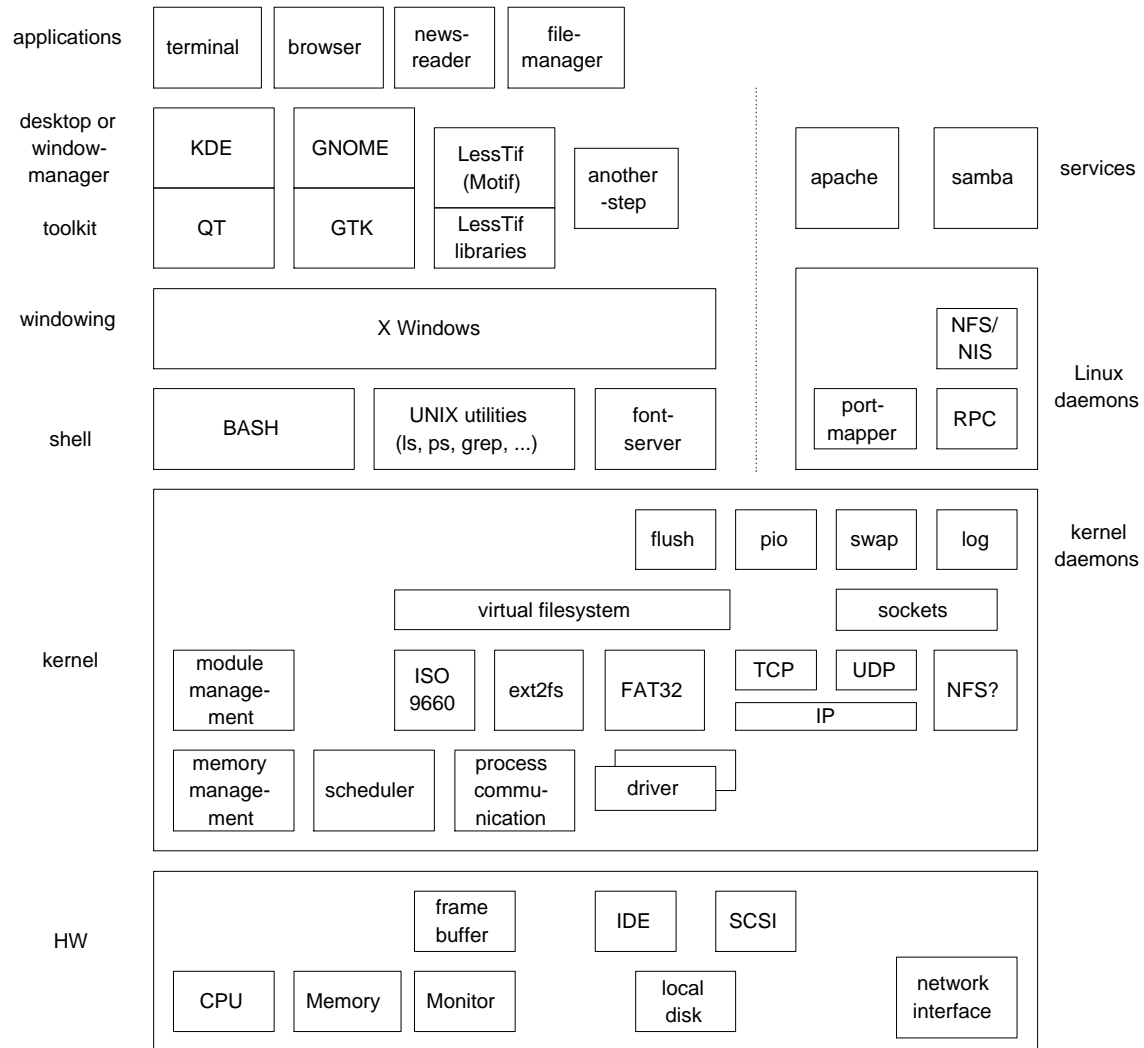
## User visible entities



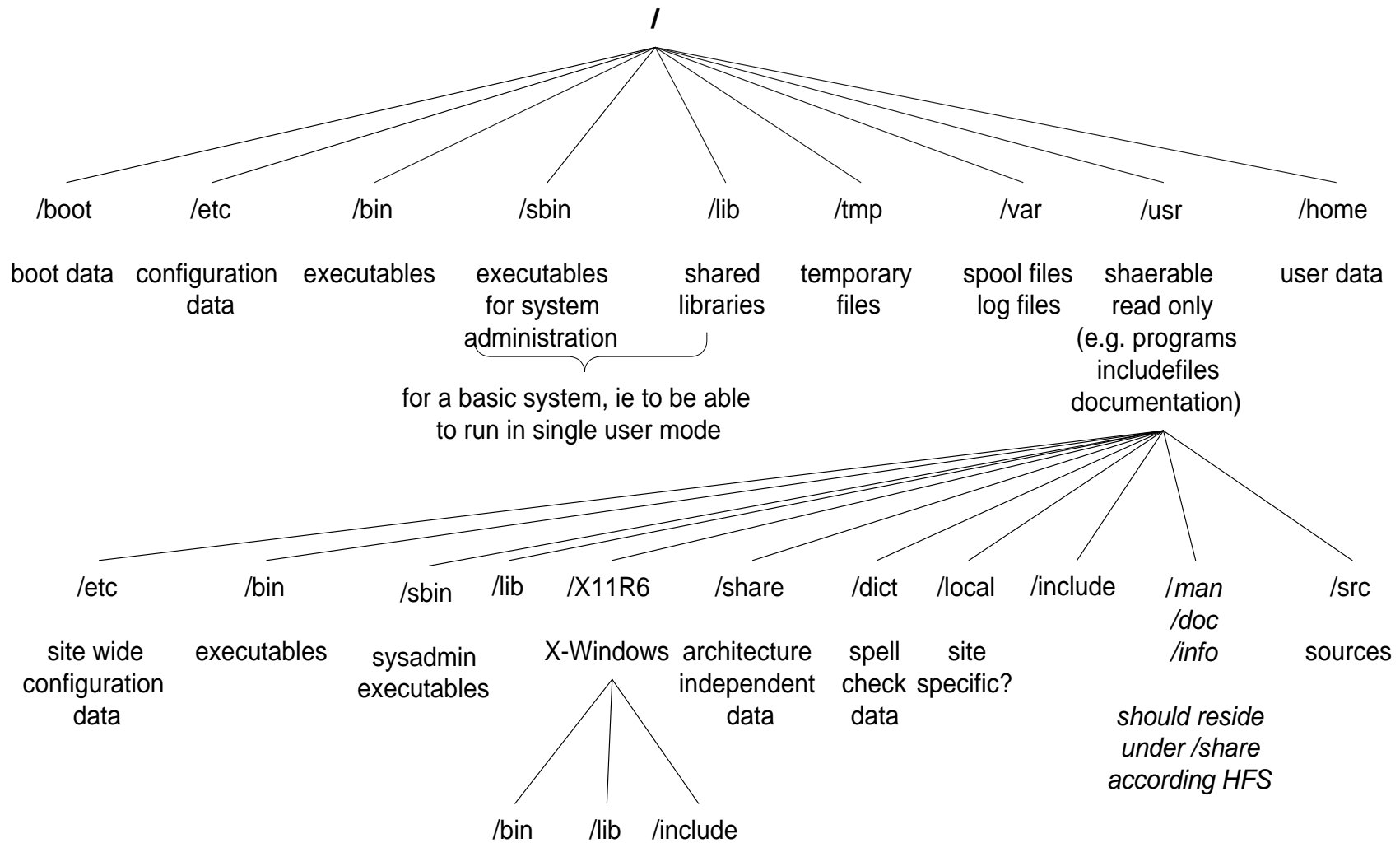
## The invisible Software



# The Map of Linux Country



# Typical Linux file hierarchy



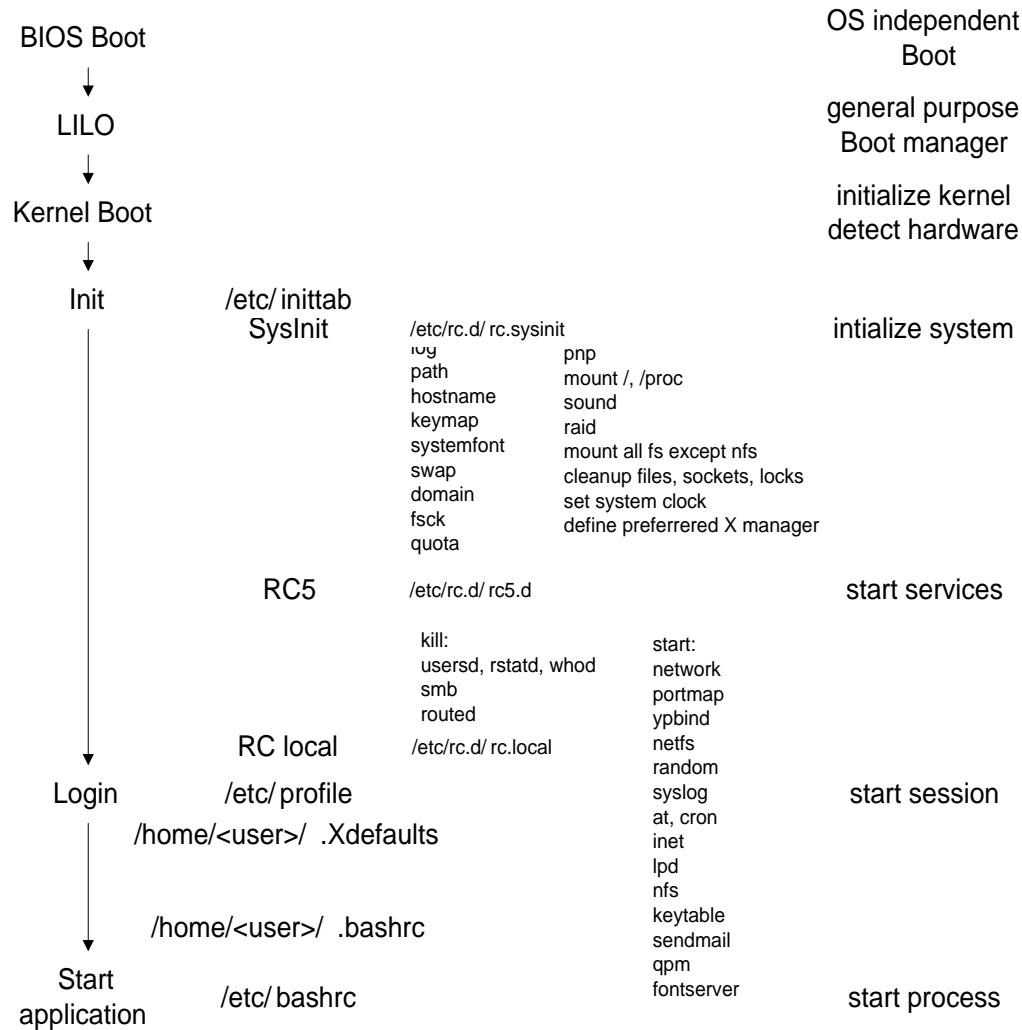
# File hierarchy allocation

---

	Minimal PC	Server	
	system specific	shareable, required for booting	shareable
"static"	/etc /boot	/bin /sbin /lib	/usr
variable	/var/run /var/lock	/var/log	/var/mail /var/spool /home



# Typical Linux Startup Sequence



# Layering of Network Addressing

---

